



**CIRCLE CASTER
ENGINEERING CO.**

PRODUCT CATALOG



A *Cortina*
Company

The *Cortina* Companies

Cortina provides custom and proprietary injection molded, extruded, and blow molded products throughout North America and Latin America. In addition to Circle Caster Engineering, The Cortina Companies include Cortina Tool & Molding Co., Cortina Safety Products Group, and Circle Cortina Industries Canada Limited.

CUSTOM MOLDING



Cortina Tool & Molding can bring savings and efficiencies to your custom molding project every step of the way from concept design to finished product production.

Our machinery and our people are state of the art, committed to bringing you cost-effective solutions. Whatever the material - from the simplest to the latest engineering breakthrough - whatever the tolerance - from short runs to high volume runs with multiple cavity and stack molds - we can produce the highest quality results from prototypes to full production runs.

Combining our molding experience with our secondary operations and finishing capabilities, we offer short lead times and superior quality control.

At every stage of the process - blueprint, tooling, production, finishing, packing, and shipping - we're adding elements of efficiency and reliability. The end result: a cost effective solution to every molding problem.

CORTINA SAFETY PRODUCTS GROUP



For over 40 years the Cortina Safety Products Group has been a leading Manufacturer and Supplier of auto aftermarket, traffic safety and work zone protection products. We manufacture over 85% of our high quality products at our state of the art facility located in Franklin Park, IL. Primary products include highway warning triangles, fleet kits, plastic and steel leg barricades, parade style barricade legs and planks, stop slow paddles, delineator posts, 360 degree channelizers and a trim line channelizer, safety vests, flags and traffic cones. We sell exclusively through distributors and have an extensive network of manufacturer's rep agencies.

CIRCLE CASTER ENGINEERING



Circle Caster Engineering Company is a leading manufacturer and supplier of wheels, casters, and accessories. Our products are found in a wide variety of environments ranging from industrial, commercial, recreational, consumer, and specialized applications. Our modern ISO 9001:2008 certified manufacturing and injection molding facilities are the core of our business. Every step of the manufacturing process is monitored and controlled assuring that you receive quality products truckload after truckload.

CCI CANADA



CCI Canada was founded with one primary focus, CANADA! Centrally located in Ontario, CCI is stocked and ready to ship a large array of products. By combining the product offerings of Circle Caster Engineering Co. and Cortina Safety Products Group, CCI has the industries highest quality products and competitive prices!

CCI Canada is a Canadian company in tune with the needs of the Canadian market place. Our staffed Distribution Center located in Brantford Ontario is supported with local sales people committed to exceeding your needs.

CONTENT

CUSTOM WHEELS	1-2
TREAD CAP WHEELS.....	3-4
SEMI PNEUMATIC WHEELS	5
PNEUMATIC WHEELS	6
DECK WHEELS	7
POLYTECH MAG WHEEL.....	8
POLY O SERIES	
WHITE GENERAL DUTY.....	9
DISHED GENERAL DUTY	10-12
DISHED HEAVY DUTY	13
STRAIGHT SIDED HEAVY DUTY	14
RIBBED HEAVY DUTY.....	15
SPECIALTY WHEELS	17-18
POLYTECH SERIES THERMOPLASTIC RUBBER.....	19
POLYTECH SERIES POLYURETHANE.....	20
VALUE SERIES MOLD ON WHEELS	
THERMOPLASTIC RUBBER.....	21
POLYURETHANE ON POLYOLEFIN	21
RUBBER ON CAST IRON	22
DURATOUGH.....	22
PHENOLIC WHEELS	23
HI TEMP / HEAT DEFLECTOR.....	24
SOLID RUBBER WHEELS	25-26
NYLON HOODED TWIN WHEEL CASTERS.....	27-28
CASTERS	
ANATOMY OF A CASTER.....	29
100 SERIES LIGHT DUTY	30
130 SERIES MEDIUM DUTY	31
200 SERIES MEDIUM HEAVY DUTY	32
PNEUMATIC CASTERS.....	33
BEARINGS & BUSHINGS.....	34-35

The intention of this catalog is to provide a guide to identify your wheel and caster needs. Please contact your Circle Caster Engineering Representative for specifications and other offerings. All offerings are subject to change at any time without notice.



www.CortinaCo.com

WHEEL & CASTER SELECTION

WHEEL COMPOSITION	LOAD CAPACITY (LBS)	TEMPERATURE RANGE (Fahrenheit)	FLOOR SURFACES											CONDITIONS									
			ASPHALT	BRICK	CARPET	CONCRETE	LINOLEUM	TERRAZZO	TILE	SMOOTH STEEL	RIBBED STEEL	WOOD	ANIMAL FATS	CUSHION LOAD	EXTREME COLD	FLOOR PROTECTION	HIGH HEAT	METAL CHIPS	MILD CHEMICALS	NOISE REDUCTION	OIL/GREASE	STEAM	WATER
Moldon Polyurethane	600 - 4800	-45° - +180°	•	•	•	•	•	•	•	•	•	•	•	•	•	•	•	•	•	•	•	•	•
Moldon Rubber	540 - 1140	-45° - +180°	•	•	•	•	•	•	•	•	•	•	•	•	•	•	•	•	•	•	•	•	•
Phenolic	300 - 400	-45° - +180°		•	•	•												•					
Pneumatic	300 - 340	-45° - +180°	•	•	•	•	•	•	•	•	•	•	•	•	•	•	•	•	•	•	•	•	•
Polyolefin	75 - 90	-45° - +180°		•	•	•							•	•	•	•		•		•	•	•	•
Rubber	60 - 325	-45° - +180°	•	•	•	•	•	•	•	•	•	•	•	•	•	•	•	•	•	•	•	•	•

DUROMETER RATINGS

SHORE A	20	30	40	50	60	70	80	90	95				
SHORE D							35	45	55	65	75	85	90
	RUBBER					POLYURETHANE			PLASTIC				
						Mold on Rubber			Polyurethane	Polyolefin		PVC	Phenolic

MEASUREMENT CONVERSION TABLE

Inches Fraction	Inches Decimal	Millimeter
1/8	.125	3.18
5/32	.156	3.97
3/16	.188	4.76
5/16	.312	7.94
3/8	.375	9.53
7/16	.438	11.11
1/2	.50	12.70
9/16	.562	14.29
5/8	.625	15.88
11/16	.688	17.46
3/4	.750	19.05
13/16	.812	20.64
7/8	.875	22.23

CHOOSING THE PROPER WHEEL

When choosing the correct wheel, it is important to select the right one for your application. When choosing the proper wheel, the surrounding area in which it will be used must be considered. The type of surface that the wheel will roll on and the environment will help you make the best selection. Additionally, the wheel you chose should withstand the weight of the load that it will carry. Load capacities vary depending on the size and material composition of the wheel.

Load capacities are referenced for every wheel in the following pages.

These load capacities are provided for one wheel.

If 4 wheels are needed, multiply the load capacity by 4 for the total load.

CONSIDER THE FOLLOWING:

- What is the total load capacity that will be supported?
- What type of surface and where will the wheel be used?
- What is the condition of the surface?
- What type of mounting is necessary?
- Are there any height limitations?
- Is a brake required?
- Will equipment be subject to shock loading?
- What is the maximum speed the equipment will experience?
- Will the equipment be used in food preparation or handling?
- Does the environment have fluctuating or extreme temperatures?



**CIRCLE CASTER
ENGINEERING CO.**

A *Cortina*

Company



Keeping Your Products Rolling...

Circle Engineering Company was founded in 1956 with a vision of manufacturing industrial and consumer products. The introduction of a child's tricycle created a need for wheels, which over the years has evolved into a premier line of sizes and styles for a wide variety of applications. A commitment to quality, service, and reliability, at a competitive price, paved the way for success. Attention to detail, design, and customer service set us apart from the competition.



Today, as a member of The Cortina Companies, Circle Caster Engineering Co., is a leading manufacturer and supplier of wheels, casters, and accessories. Our dedication to parts that continually meet your specifications is supported by a modern, ISO 9001:2008 certified manufacturing facility. In addition, computer controlled inventory, stocking programs, and our 75,000 square foot distribution center provide quick turnaround on orders and JIT deliveries.

We define our core line as those products that we have the capability to produce the tooling for or a source of supply. Our extensive line of wheels and casters can be found in industrial, commercial, recreational, and consumer environments. For any specialized applications, our engineering department can assist you with full design, testing, and CAD capabilities.

Our fully staffed customer support group and knowledgeable sales associates are here to meet your needs and continue our long tradition of excellent service.



CUSTOM WHEELS



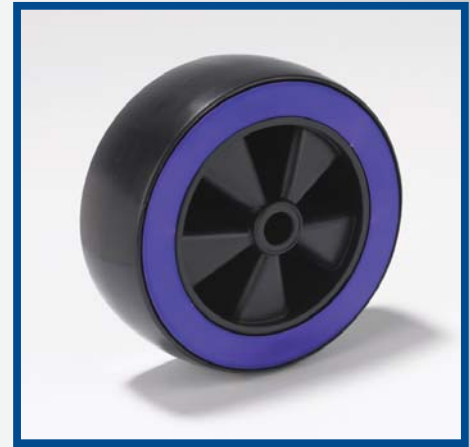
When it comes to Custom Wheels, Circle Caster Engineering has the capability to design and craft wheels to meet your custom specifications. Understanding your needs is our first priority and a critical step in the custom manufacturing process. We know that every customer has unique needs and objectives based on product application, surrounding conditions, and budget range. We will work closely with you from start to finish on all new designs to ensure and exceed the desired product expectation.

With over 50 years industry experience in wheel manufacturing, we pride ourselves in knowing that a quality custom wheel design will maintain and extend the longevity of the equipment it supports as well as enhance the integral aesthetics of an overall design. Our dedicated engineering department can assist you with full design, testing, and CAD capabilities. Our sales and customer service professionals are knowledgeable and eager to assist with your custom wheel needs.

Circle Caster Engineering can make your ideas a reality!



CUSTOM WHEELS



TREAD CAP



SAMPLE TREAD PATTERNS



Bar Tread



Diamond Tread



Modified Bar Tread



S-Wave Tread

Standard Tread Design is our Diamond Pattern. Circle Caster has the tooling capability to transform your tread design idea into reality.

TREAD CAP WHEELS

Circle Caster Engineering is pleased to announce our new line of TREAD CAP WHEELS. These sturdy wheels are made with a Copolymer Polypropylene Hub and a Molded Tread Cap that provide a DURABLE yet LIGHTWEIGHT option for your applications.

Available in 7", 8" and 9" Diameters

Wheel Diameter	Tread Width	Bore Size	Hub Length	Tread Pattern	Hub Color	Tread Color	Load Capacity	Part #
6	1.5	5/16	1.5	Diamond	Black	Black	50	88-060-56-07
6	1.5	5/16	1.5	Diamond	White	Black	50	88-060-56-06
6	1.5	5/16	1.5	Diamond	Black	Black	50	88-060-12-07
6	1.5	1/2	1.5	Diamond	White	Black	50	88-060-12-06
6	1.5	3/4	1.5	Diamond	Black	Black	50	88-060-34-07
6	1.5	3/4	1.5	Diamond	White	Black	50	88-060-34-06
7	1.5	5/16	1.5	Diamond	Black	Black	75	88-070-56-07
7	1.5	5/16	1.5	Diamond	White	Black	75	88-070-56-06
7	1.5	5/16	1.5	Diamond	Black	Black	75	88-070-12-07
7	1.5	5/16	1.5	Diamond	White	Black	75	88-070-12-06
7	1.5	5/16	1.5	Diamond	Black	Black	75	88-070-34-07
7	1.5	5/16	1.5	Diamond	White	Black	75	88-070-34-06
7	1.5	1/2	1.5	Diamond	White	Black	75	88-070-12-06
8	1.75	5/16	1.5	Diamond	Black	Black	100	88-080-56-07
8	1.75	5/16	1.5	Diamond	White	Black	100	88-080-56-06
8	1.75	1/2	1.5	Diamond	Black	Black	100	88-080-12-07
8	1.75	1/2	1.5	Diamond	White	Black	100	88-080-12-06
8	1.75	3/4	1.5	Diamond	Black	Black	100	88-080-34-07
8	1.75	3/4	1.5	Diamond	White	Black	100	88-080-34-06
9	1.75	5/16	1.5	Diamond	Black	Black	110	88-090-56-07
9	1.75	5/16	1.5	Diamond	White	Black	110	88-090-56-06
9	1.75	5/16	1.5	Diamond	Black	Black	110	88-090-12-07
9	1.75	5/16	1.5	Diamond	White	Black	110	88-090-12-06
9	1.75	5/16	1.5	Diamond	Black	Black	110	88-090-34-07
9	1.75	5/16	1.5	Diamond	Black	Black	110	88-090-34-07
10	1.75	5/16	1.5	Diamond	Black	Black	110	88-010-56-07
10	1.75	5/16	1.5	Diamond	White	Black	110	88-010-56-06
10	1.75	1/2	1.5	Diamond	Black	Black	110	88-010-12-07
10	1.75	1/2	1.5	Diamond	White	Black	110	88-010-12-06
10	1.75	3/4	1.5	Diamond	Black	Black	110	88-010-34-07
10	1.75	3/4	1.5	Diamond	White	Black	110	88-010-34-06

Custom hub lengths can be requested, based on minimum quantities.

Custom I.D. variations can be requested, based on minimum quantities.

Optional ball bearings can be inserted into the axle housing. (Standard: .315, .500, .625)

Custom hub colors are available upon request, based on minimum quantities.

SEMI-PNEUMATIC

These wheels provide excellent floor protection, quiet operation, and a unique appearance. They are wear resistant and have superior strength, which makes them ideal for lawn and garden applications.

Available in 4", 5", 6", 7", 8" and 10" Diameters.

Wheel Diameter	Tread Width	Load Capacity	Bore Size	Hub Length	Bearing Type	Tread Style	Offset Hub	Hub Style	Hub Color	Part Number
4	1	115	5/16	1 1/8	Sintered	Smooth	No	6-Spoke	Silver	99-013-BA-32
5	1	125	5/16	1 1/8	Sintered	Smooth	No	6-Spoke	Silver	99-013-CC-32
5	1 3/8	240	3/8	1 1/2	Roller	Smooth	No	6-Spoke	Silver	99-013-DF-37
6	1 1/2	35	1/2	1 5/8	Plain	Diamond	Yes	4-Spoke	White	99-013-EJ-20
6	1 3/4	125	3/8	1 1/2	Roller	Rib	No	6-Spoke	Silver	99-013-IF-37
7	1 1/2	50	1/2	1 1/2	Plain	Diamond	Yes	4-Spoke	White	99-013-JJ-20
7 1/2	1 3/4	50	1/2	1 1/2	Plain	Diamond	Yes	4-Spoke	White	99-013-XJ-20
8	1 3/4	50	1/2	1 5/8	Plain	Diamond	Yes	4-Spoke	White	99-013-PJ-20
8	1 3/4	125	1/2	1 5/8	Plain	Rib	Yes	6-Spoke HD	Silver	99-013-SN-30

Additional sizes and hub colors available in volume with lead time.



PNEUMATIC WHEELS

Circle Caster's AIR MASTER Pneumatic wheels provide excellent shock absorption, durability and long life performance. We use Butyl tubes to ensure that your tires are not flat when it comes time to use them!

8" and 10" Diameters in Centered and Offset Hubs

1/2", 5/8" and 3/4" Ball Bearings are available



Wheel Diameter	Tread Width	Load Capacity	Bore Size	Hub Length	Bearing Type	Tread Style	Offset Hub	Tire Color	Part Number		Shipping Weight
8	280/250-4	300	1/2	3	Ball	Sawtooth	No	Black	89-21-011		3.5
8	280/250-4	300	1/2	2 1/2	Ball	Sawtooth	Yes	Black	89-22-011		3.5
8	280/250-4	300	5/8	3	Ball	Sawtooth	No	Black	89-21-012	S	3.5
8	280/250-4	300	5/8	2 1/2	Ball	Sawtooth	Yes	Black	89-22-012		3.5
8	280/250-4	300	3/4	3	Ball	Sawtooth	No	Black	89-21-013		3.5
8	280/250-4	300	3/4	2 1/2	Ball	Sawtooth	Yes	Black	89-22-013		3.5
10	410/350-4	350	1/2	4	Ball	Sawtooth	No	Black	89-31-011		5
10	410/350-4	350	1/2	2 1/2	Ball	Sawtooth	Yes	Black	89-32-011		5
10	410/350-4	350	5/8	4	Ball	Sawtooth	No	Black	89-31-012		5
10	410/350-4	350	5/8	2 1/2	Ball	Sawtooth	Yes	Black	89-32-012		5
10	410/350-4	350	3/4	4	Ball	Sawtooth	No	Black	89-31-013		5
10	410/350-4	350	3/4	2 1/2	Ball	Sawtooth	Yes	Black	89-32-013		5
10	410/350-4	350	3/4	4	Ball	Sawtooth	Yes	Black	89-31-113		5
16	480/400-8	515	1	3 1/4	Plain	Rib	No	Black	89-61-014	S	7.5



"S" Denotes standard stock items. Stock - we carry in inventory.

DECK WHEELS

As the preeminent supplier to the lawn and garden industry, Circle Caster carries a wide selection of anti-scalp deck wheels and offers a solution for every application. Circle can furnish you with standard or custom designs.



Anti-Scalp



Nesting Roller



Ribbed Heavy Duty



Dished Heavy Duty



Part Number	Diameter	Tread Width	Bore Size	Hub Length	Bearing Type	Offset Hub		Comment
90-03-001	4	1 1/2	1/2	1 1/2	Plain	Yes	S	
90-01-021	4	4	5/8	4	Plain	No	S	
90-01-020	4	1 1/4	1/2	1 7/16	Plain	No		
90-01-052Z	5	2	1/2	2 7/16	Roller	No	S	Spanner
90-01-054Z	6	1 1/2	1/2	1 7/8	Roller	No	S	Spanner
90-01-068Z	8	2	5/8		Roller	No	S	Spanner
90-01-064	6	2	5/8	2 1/8	Plain	No	S	
90-02-055	5	1 3/8	1/2	1 1/2	Bushing	No	S	
90-02-059	6	1 3/8	1/2	1 1/2	Bushing	No	S	
90-03-003	5	2	1/2	2 1/2	Plain	Yes	S	
90-02-031	3	1 3/4	7/16	1 7/8	Plain	No	S	
90-03-039	5	2	3/8	2 1/2	Plain	Yes	S	
90-03-002	5	2	1/2	1 5/8	Plain	Yes	S	
90-03-006	5	2 3/4	1/2	2 1/2	Plain	Yes	S	
90-03-016Z	6	2	5/8	2 7/16	Roller	No		Phenolic w Spanner
90-03-038	5	2 3/4	1/2	3 5/16	Plain	No	S	
90-03-005	5	2 3/4	5/8	2 1/2	Plain	Yes	S	
90-03-037	5	2 3/4	5/8	3 5/16	Plain	No	S	
90-03-049	5	2	5/8	1 3/4	Plain	Yes	S	
90-01-100	6	3 1/4	3/4	3 1/2	Plain	No		
90-01-164A	6	2	5/8	2 1/4	Plain	No		

POLYTECH MAG WHEEL



- Custom Colors Available
- Consult Factory for Availability

These wheels provide quality and a competitive price. They are smooth rolling, quiet, impact and chemical resistant, while providing excellent floor protection. Tread materials available in durable Polyurethane and Thermoplastic Rubber.

Diameter	Tread Width	Load Capacity	Bore Size	Hub Length	Bearing Type	Offset Hub	Hub Color		Part Number
10	2	450	5/8	2 3/16	Plain	Yes	Black		90-06-046
10	2	450	3/4	2 3/16	Plain	Yes	Black	S	90-06-043
10	2	450	5/8	2 3/16	Plain	Yes	Silver		90-06-046-03
10	2	450	3/4	2 3/16	Plain	Yes	Silver	S	90-06-043-03



"S" Denotes standard stock items. Stock - we carry in inventory.

POLY O SERIES WHITE GENERAL DUTY



Poly O Wheels have been the core of the Circle Caster product line since 1956. These wheels are manufactured from a proprietary blend of specially compounded Polyolefin. This special blend helps achieve the perfect balance between durability, temperature range and the ability to resist almost any chemical. These wheels are virtually unaffected by water, grease, gasoline, solvents and most acids. They are light weight and highly impact resistant.

TEMPERATURE RANGE: -20 F/+180 F | DUROMETER: 70 SHORE D

- Available in: General Duty, Heavy Duty, and Ribbed Design for added Load Capacity
- Size: Range: 2" to 10"

Wheel Diameter	Tread Width	Load Capacity	Bore Size	Hub Length	Bearing Type	Part Number	
3	1 1/4	225	3/8	1 9/16	Plain	81-10-023	
3	1 3/8	225	1/2	1 1/2	Plain	81-10-134	
4	1 3/8	375	1/2	1 1/2	Plain	81-20-134	S
4	1 1/2	375	3/4	1 5/8	Delrin	81-21-046	
4	1 1/2	375	3/4	1 5/8	Roller	81-22-046	
4	1 1/2	375	1 3/16	1 5/8	Plain	81-20-048	S
4	2	500	3/4	2 3/16	Delrin	81-21-056	
4	2	500	3/4	2 3/16	Roller	81-22-056	
4	2	500	1 3/16	2 3/16	Plain	81-20-058	S
5	1 3/8	450	1/2	1 1/2	Plain	81-30-134	S
5	1 1/2	450	1/2	1 5/8	Plain	81-30-044	S
5	1 1/2	450	3/4	1 5/8	Delrin	81-31-046	
5	1 1/2	450	3/4	1 5/8	Roller	81-32-046	
5	1 1/2	450	1 3/16	1 5/8	Plain	81-30-048	S
5	2	700	3/4	2 3/16	Plain	81-30-056	S
5	2	700	3/4	2 3/16	Delrin	81-31-056	
5	2	700	3/4	2 3/16	Roller	81-32-056	
5	2	700	1 3/16	2 3/16	Plain	81-30-058	S
6	1 1/2	500	1/2	1 5/8	Plain	81-40-044	
6	1 1/2	500	5/8	1 5/8	Plain	81-40-045	
6	1 1/2	500	3/4	1 5/8	Delrin	81-41-046	
6	1 1/2	500	3/4	1 5/8	Roller	81-42-046	
6	1 1/2	500	1 3/16	1 5/8	Plain	81-40-048	
6	2	750	3/4	2 3/16	Plain	81-40-056	S
6	2	750	3/4	2 3/16	Delrin	81-41-056	
6	2	750	3/4	2 3/16	Roller	81-42-056	
6	2	750	1 3/16	2 3/16	Plain	81-40-058	S
8	2	1000	5/8	2 3/16	Plain	81-50-055	
8	2	1000	3/4	2 3/16	Plain	81-50-056	
8	2	1000	3/4	2 3/16	Delrin	81-51-056	
8	2	1000	3/4	2 3/16	Roller	81-52-056	
8	2	1000	1 3/16	2 3/16	Plain	81-50-058	S

POLY O SERIES DISHED GENERAL DUTY

Capacity 75-1050



OPTIONS

- Metal Washers
- Grease Zerk in Wheel
- Sealed Precision Bearings



FEATURES

- Light Weight
- Cost Effective
- Easily Cleaned
- Highly Impact Resistant
- Unaffected by Most Chemicals

TEMPERATURE RANGE -20° F / + 180° F
DUROMETER 70 SHORE D

Wheel Diameter	Tread Width	Load Capacity	Bore Size	Hub Length	Bearing Type	Part Number		Shipping Weight
4	2	550	1/2	2 3/16	Delrin	90-41-030		1
4	2	550	3/4	2 5/16	Plain	90-01-031	S	1
4	2	550	3/4	2 3/16	Delrin	90-51-030		1
4	2	550	3/4	2 3/16	Roller	90-21-030		1
4	2	550	1 5/32	2 3/16	Plain	90-03-008		1
4	2	550	1 3/16	2 3/16	Plain	90-01-030	S	1
5	1	145	5/16	1 1/8	Plain	90-01-034		.75
5	1 1/4	290	5/16	1 7/16	Plain	90-01-035		.75
5	1 1/4	290	1/2	1 9/16	Plain	90-01-036		.75
5	1 1/4	290	3/8	1 9/16	Plain	90-02-060		.75
5	1 3/8	400	1/2	1 1/2	Sintered	90-02-055	S	.75
5	1 1/2	450	3/8	1 5/8	Plain	90-04-041		1
5	1 1/2	450	1/2	1 5/8	Plain	90-01-042		1
5	1 1/2	450	1/2	1 5/8	Delrin	90-41-046		1
5	1 1/2	450	3/4	1 5/8	Delrin	90-51-046		1
5	1 1/2	450	3/4	1 5/8	Roller	90-21-046		1
5	1 1/2	450	13/16	1 5/8	Plain	90-01-045		1
5	1 1/2	450	1 5/32	1 5/8	Plain	90-03-009		1
5	1 1/2	450	1 3/16	1 5/8	Plain	90-01-046		1
5	2	650	1/2	2 3/16	Delrin	90-41-053	S	1.25
5	2	650	5/8	2 1/8	Plain	90-01-092		1.25
5	2	650	3/4	2 1/8	Plain	90-01-050		1.25
5	2	650	3/4	2 3/16	Delrin	90-51-053		1.25
5	2	650	3/4	2 3/16	Roller	90-21-053		1.25
5	2	650	1 5/32	2 3/16	Plain	90-03-010		1.25
5	2	650	1 3/16	2 3/16	Plain	90-01-053		1.25

"S" Denotes standard stock items. Stock - we carry in inventory.

POLY O SERIES DISHED GENERAL DUTY

Capacity 75-1050



Poly O wheels have been the core of the Circle Caster product line since its inception more than 50 years ago. Poly O wheels are manufactured at our Chicago facility from a proprietary blend of specially compounded Polyolefins. This special blend helps us to achieve the perfect balance between durability, temperature range, and the ability to resist almost any chemical. These wheels are virtually unaffected by water, grease, gasoline, solvents, and most acids. In addition to their other obvious benefits, these wheels are also light weight and highly impact resistant.

OPTIONS

- Metal Washers
- Grease Zerk in Wheel
- Sealed Precision Bearings

FEATURES

- Light Weight
- Cost Effective
- Easily Cleaned
- Highly Impact Resistant
- Unaffected by Most Chemicals

TEMPERATURE RANGE -20 F / + 180 F

DUROMETER 70 SHORE D

Wheel Diameter	Tread Width	Load Capacity	Bore Size	Hub Length	Bearing Type	Part Number		Shipping Weight
2	9/16	75	1/4	5/8	Plain	90-01-111		.08
2	9/16	75	5/16	5/8	Plain	90-01-110		.08
2	13/16	100	1/4	15/16	Plain	90-01-080A		.08
2	13/16	100	5/16	15/16	Plain	90-02-052-1	S	.08
2	3/4	100	5/16	15/16	Plain	90-02-052-2	S	.08
2 1/2	13/16	150	1/4	15/16	Plain	90-01-006		.2
2 1/2	1 1/8	200	5/16	1 3/8	Plain	90-01-007		.2
2 1/2	1 1/8	200	1/2	1 1/4	Plain	90-02-045	S	.2
3	9/16	125	1/4	11/16	Plain	90-01-113		.2
3	13/16	150	1/4	15/16	Plain	90-01-012	S	.2
3	13/16	150	5/16	15/16	Plain	90-01-112	S	.2
3	13/16	150	3/8	15/16	Plain	90-01-013		.2
3	1 1/4	250	5/16	1 7/16	Plain	90-01-015	S	.25
3	1 1/4	250	3/8	1 9/16	Plain	90-01-016A	S	.25
3	1 1/4	250	1/2	1 9/16	Plain	90-01-079	S	.25
4	1	135	5/16	1 1/8	Plain	90-01-017A	S	.25
4	1 1/4	275	5/16	1 7/16	Plain	90-01-018		.5
4	1 1/4	275	5/16	1 9/16	Plain	90-01-118		.5
4	1 1/4	275	3/8	1 7/16	Plain	90-01-019		.5
4	1 1/4	275	3/8	1 9/16	Plain	90-01-089	S	.5
4	1 1/4	275	1/2	1 9/16	Plain	90-02-038	S	.5
4	1 1/4	275	1/2	1 3/8	Plain	90-01-086		.5
4	1 1/2	375	3/8	1 5/8	Plain	90-01-024		.75
4	1 1/2	375	1/2	1 5/8	Delrin	90-41-099		.75
4	1 1/2	375	3/4	1 5/8	Plain	90-01-027		.75
4	1 1/2	375	3/4	1 5/8	Delrin	90-51-099		.75
4	1 1/2	375	3/4	1 5/8	Roller	90-21-099		.75
4	1 1/2	375	13/16	1 5/8	Plain	90-01-028		.75
4	1 1/2	375	1 5/32	1 5/8	Plain	90-03-007		.75
4	1 1/2	375	1 3/16	1 5/8	Plain	90-01-099	S	.75

POLY O SERIES DISHED GENERAL DUTY

Capacity 75-1050



OPTIONS

- Metal Washers
- Grease Zerk in Wheel
- Sealed Precision Bearings

FEATURES

- Light Weight
- Cost Effective
- Easily Cleaned
- Highly Impact Resistant
- Unaffected by Most Chemicals



TEMPERATURE RANGE -20° F / + 180° F
DUROMETER 70 SHORE D

Wheel Diameter	Tread Width	Load Capacity	Bore Size	Hub Length	Bearing Type	Part Number		Shipping Weight
6	1 3/8	450	1/2	1 1/2	Sintered	90-02-059	S	1.2
6	1 1/2	500	3/8	1 5/8	Plain	90-01-056		1.2
6	1 1/2	500	1/2	1 5/8	Plain	90-02-041		1.2
6	1 1/2	500	5/8	1 5/8	Plain	90-02-029		1.2
6	1 1/2	500	3/4	1 5/8	Delrin	90-51-058		1.2
6	1 1/2	500	3/4	1 5/8	Roller	90-21-058		1.2
6	1 1/2	500	13/16	1 5/8	Plain	90-01-057		1.2
6	1 1/2	500	1 3/16	1 5/8	Plain	90-01-058		1.2
6	2	700	1/2	2 1/8	Plain	90-02-085		1.5
6	2	700	1/2	2 3/16	Delrin	90-41-061		1.5
6	2	700	5/8	2 1/4	Plain	90-02-080		1.5
6	2	700	3/4	2 1/4	Plain	90-01-066	S	1.5
6	2	700	3/4	2 3/16	Delrin	90-51-061		1.5
6	2	700	3/4	2 3/16	Roller	90-21-061		1.5
6	2	700	1 5/32	2 3/16	Plain	90-033-011		1.5
6	2	700	1 3/16	2 3/16	Plain	90-01-061		1.5
8	2	1000	5/8	2 3/16	Plain	90-01-070		2
8	2	1000	3/4	2 3/16	Plain	90-01-093	S	2
8	2	1000	3/4	2 3/16	Delrin	90-51-072		2
8	2	1000	3/4	2 3/16	Delrin	90-21-072	S	2
8	2	1000	1 5/32	2 3/16	Plain	90-03-012		2
8	2	1000	1 3/16	2 3/16	Plain	90-01-072		2
10	2 1/4	1050	3/4	2 3/4	Delrin	90-53-032		3
10	2 1/4	1050	3/4	2 3/4	Roller	90-23-032		3
10	2 1/4	1050	1	2 3/4	Plain	90-03-021		3
10	2 1/4	1050	1 3/16	2 3/4	Plain	90-03-032		3

"S" Denotes standard stock items. Stock - we carry in inventory.

POLY O SERIES DISHED HEAVY DUTY

Capacity 425-1000



The Dished Heavy Duty Series is manufactured with a much thicker cross section than the General Duty line, allowing for higher weight capacities and greater impact resistance.

OPTIONS

- Metal Washers
- Grease Zerk in Wheel
- Sealed Precision Bearings

FEATURES

- Cost Effective
- Easily Cleaned
- Highly Impact Resistant
- Unaffected by Most Chemicals

TEMPERATURE RANGE -20° F / + 180° F

DUROMETER 70 SHORE D

Wheel Diameter	Tread Width	Load Capacity	Bore Size	Hub Length	Bearing Type	Part Number		Shipping Weight
4	1 1/2	425	3/4	1 5/8	Delrin	90-51-199		.25
4	1 1/2	425	3/4	1 5/8	Roller	90-21-199		.25
4	1 1/2	425	1 3/16	1 5/8	Plain	90-01-199		.25
4	2	550	3/4	2 5/16	Plain	90-01-031	S	1
4	2	550	3/4	2 3/16	Delrin	90-51-030		1
4	2	550	3/4	2 3/16	Roller	90-21-030		1
4	2	550	1 3/16	2 3/16	Plain	90-01-030	S	1
5	1 1/2	500	1/2	1 5/8	Plain	90-01-142		1
5	1 1/2	500	3/4	1 5/8	Delrin	90-51-146		1
5	1 1/2	500	3/4	1 5/8	Roller	90-21-146		1
5	1 1/2	500	1 3/16	1 5/8	Plain	90-01-146		1
5	2	700	3/4	2 5/16	Plain	90-01-150		1.25
5	2	700	3/4	2 3/16	Delrin	90-51-153		1.25
5	2	700	3/4	2 3/16	Roller	90-21-153		1.25
5	2	700	1 3/16	2 3/16	Plain	90-01-153A	S	1.25
6	1 1/2	550	1/2	1 5/8	Plain	90-02-067		1.3
6	1 1/2	550	3/4	1 5/8	Delrin	90-51-058		1.3
6	1 1/2	550	3/4	1 5/8	Roller	90-21-058		1.3
6	1 1/2	550	1 3/16	1 5/8	Plain	90-01-058		1.3
6	2	800	3/4	2 3/16	Plain	90-01-166	S	1.5
6	2	800	3/4	2 3/16	Delrin	90-51-161		1.5
6	2	800	3/4	2 3/16	Roller	90-21-161		1.5
6	2	800	1 3/16	2 3/16	Plain	90-01-161		1.5
6	2	1200 Extra HD	1/2	2 1/4	Plain	90-02-081		1.5
6	2	1200 Extra HD	1/2	2 3/8	Plain	90-02-036		1.5
6	2	1200 Extra HD	3/4	2 1/4	Plain	90-02-054		1.5
6	2	1200 Extra HD	3/4	2 3/8	Plain	90-02-053		1.5
6		1200 Extra HD	3/4	2 3/8	Roller	90-22-082		1.5
6	2	1200 Extra HD	1 3/16	2 3/8	Plain	90-02-082		1.5
8	2	1000	3/4	2 3/16	Plain	90-01-093	S	2
8	2	1000	3/4	2 3/16	Delrin	90-51-072		2
8	2	1000	3/4	2 3/16	Roller	90-21-072		2
8	2	1000	1 3/16	2 3/16	Plain	90-01-072	S	2

POLY O SERIES STRAIGHT SIDED HEAVY DUTY

The Straight Sided Heavy Duty Series is manufactured from the same proprietary blend of Polyolefins as the General Duty line but with a much thicker cross section. This allows for a higher weight capacity and greater impact resistance, while maintaining all of the other benefits that are inherent to the Poly O line.



FEATURES

- Easily Cleaned
- Highly Impact Resistant
- Unaffected by Most Chemicals

TEMPERATURE RANGE -20° F / + 180° F
DUROMETER 70 SHORE D

• Minimum Order Quantities May Apply

Wheel Diameter	Tread Width	Load Capacity	Bore Size	Hub Length	Bearing Type	Part Number		Shipping Weight
2 5/8	1 1/2	225	3/8	1 9/16	Sintered	90-01-011		.15
3	1	175	5/16	1 1/8	Plain	90-02-003	S	.2
3	1	175	7/16	1 1/8	Plain	90-02-004		.2
3	1	175	1/2	1 1/8	Plain	90-02-077		.2
3	1 1/4	250	5/16	1 7/16	Plain	90-02-006		.25
3	1 1/4	250	3/8	1 7/16	Plain	90-02-005	S	.25
3	1 1/4	250	1/2	1 7/16	Plain	90-02-007		.25
3	1 3/4	275	3/8	2	Plain	90-02-008	S	.4
3	1 3/4	275	1/2	2	Plain	90-02-009	S	.4
3	1 3/4	275	13/16	2	Plain	90-02-010	S	.4
4	1	180	5/16	1 1/8	Plain	90-02-011		.25
4	1 1/4	300	5/16	1 7/16	Plain	90-02-012		.5
4	1 1/4	300	7/16	1 7/16	Plain	90-02-028		.5
4	1 1/4	300	1/2	1 7/16	Plain	90-02-013	S	.5
4	1 3/8	350	3/8	1 1/2	Plain	90-02-030		.5
5	1	195	5/16	1 1/8	Plain	90-02-014		.75
5	1	195	3/8	1 1/8	Plain	90-02-015		.75
5	1 1/4	325	5/16	1 7/16	Plain	90-02-016		.75
5	1 1/4	325	3/8	1 7/16	Plain	90-02-017		.75
5	1 1/4	325	1/2	1 7/16	Plain	90-02-018		.75
5	1 1/4	325	5/8	1 7/16	Plain	90-02-019		.75
5	1 3/8	425	3/8	1 1/2	Plain	90-02-020	S	.75
5	1 3/8	425	5/8	1 1/2	Plain	90-02-022		.75
5	1 3/8	425	3/4	1 1/2	Plain	90-02-021		.75
6	1 3/8	450	3/8	1 1/2	Plain	90-02-023	S	1

"S" Denotes standard stock items. Stock - we carry in inventory.

POLY O SERIES RIBBED HEAVY DUTY

Capacity 550-1000



The Dished Heavy Duty Series is manufactured with a much thicker cross section and torsional reinforcing ribs, allowing for higher weight capacities and greater impact resistance while maintaining all of the other benefits that are inherent to the Poly O line.

OPTIONS

- Metal Washers
- Grease Zerk in Wheel
- Sealed Precision Bearings

FEATURES

- Cost Effective
- Highly Impact Resistant
- Unaffected by Most Chemicals

TEMPERATURE RANGE -20° F / + 180° F
DUROMETER 70 SHORE D

Wheel Diameter	Tread Width	Load Capacity	Bore Size	Hub Length	Bearing Type	Part Number		Shipping Weight
4	2	550	3/4	2 3/16	Delrin	90-53-023		1
4	2	550	3/4	2 3/16	Roller	90-23-023		1
4	2	550	1 3/16	2 3/16	Plain	90-03-023		1
5	2	700	3/4	2 3/16	Delrin	90-53-013		1.25
5	2	700	3/4	2 3/16	Roller	90-23-013		1.25
5	2	700	1 3/16	2 3/16	Plain	90-03-013	S	1.25
6	1 1/2	550	3/4	1 5/8	Delrin	90-53-014		1.3
6	1 1/2	550	3/4	1 5/8	Roller	90-23-014		1.3
6	1 1/2	550	1 3/16	1 5/8	Plain	90-03-014		1.3
6	2	800	1/2	2 1/4	Plain	90-01-009-02A	S	1.5
6	2	800	1/2	2 3/16	Plain	90-02-040		1.5
6	2	800	5/8	2 1/4	Plain	90-01-064	S	1.5
6	2	800	3/4	2 3/16	Delrin	90-53-018		1.5
6	2	800	3/4	2 3/16	Roller	90-23-018		1.5
6	2	800	1 3/16	2 3/16	Plain	90-03-018		1.5
8	2	1000	3/4	2 3/16	Delrin	90-53-015		2
8	2	1000	3/4	2 3/16	Roller	90-23-015		2
8	2	1000	1 3/16	2 3/16	Plain	90-03-015	S	2



Your Mobility Solutions Provider!



SPECIALTY WHEELS

MAG WHEEL



The Poly O Mag Wheel will carry heavy loads in almost any environment, while providing the look that will help to get your product noticed. These wheels are available in a multitude of colors and can be provided with a Thermoplastic Rubber tread.

Wheel Diameter	Tread Width	Load Capacity	Bore Size	Hub Length	Bearing Type	Offset Hub	Part Number		Shipping Weight
10	2	550	5/8	2 3/16	Plain	Yes	90-03-046		2
10	2	550	3/4	2 3/16	Plain	Yes	90-03-036	S	2

INDUSTRIAL SPOKE



Our Industrial Spoke wheels are designed for medium duty applications that require that additional touch of style. Available in centered and offset hubs these are a cost effective choice for your application.

Wheel Diameter	Tread Width	Load Capacity	Bore Size	Hub Length	Bearing Type	Offset Hub	Part Number		Shipping Weight
8	2	450	1/2	2 3/16	Plain	Yes	90-01-094		1.75
8	2	450	1/2	2 3/16	Plain	No	90-03-042		1.75
8	2	450	5/8	2 3/16	Plain	Yes	90-01-097	S	1.75
8	2	450	5/8	2 3/16	Plain	No	90-02-035		1.75
8	2	450	3/4	2 3/16	Plain	Yes	90-02-034		1.75
8	2	450	3/4	2 3/16	Plain	No	90-03-019	S	1.75
10	2 1/4	500	5/8	2	Plain	Yes	90-03-030		2
10	2 1/4	500	5/8	2 3/16	Plain	Yes	90-03-022	S	2
10	2 1/4	500	3/4	2 3/16	Plain	Yes	90-03-017		2

DISHED OFFSET HUB



No matter the application, Circle has the wheel you need. From dished-out to offset, small diameter to large, we stock it. If your needs require a special configuration, contact one of our sales professionals to assist you. Special application wheels are produced from the same specially compounded blend of Polyolefins as the rest of the Poly O line.

Wheel Diameter	Tread Width	Load Capacity	Bore Size	Hub Length	Bearing Type	Offset Hub	Part Number	Shipping Weight
10	2 1/4	1050	3/4	2 3/16	Plain	Yes	90-03-025	2.5
10	2 1/4	1050	5/8	2 3/16	Plain	Yes	90-03-024	2.5
10	2 1/4	1050	7/8	2 3/16	Plain	Yes	90-03-026	2.5
10	2 1/4	1050	1	2 3/16	Plain	Yes	90-03-027	2.5
10	2 1/4	1050	1 3/16	2 3/16	Plain	Yes	90-03-028	2.5

SPECIALTY WHEELS

NESTING ROLLER

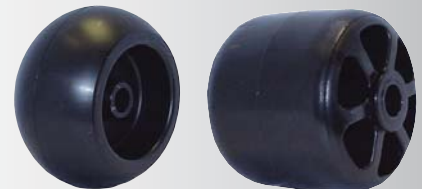
Eliminate the need to stock several different sizes of extruded rollers! This Poly O roller allows you to produce lengths from 2" to 100".



Wheel Diameter	Tread Width	Bore Size	Hub Length	Bearing Type	Part Number	Shipping Weight
3	1	1/2	1	Plain	90-02-074	.15
3	2	1/2	2	Plain	90-02-074-EC	.2

SPECIAL APPLICATION

If your needs require a special configuration, contact one of our sales professionals to assist you. Special application wheels are produced from the same compounded blend of Polyolefins as the entire Poly O line.



Wheel Diameter	Tread Width	Bore Size	Hub Length	Bearing Type	Offset Hub	Part Number		Shipping Weight
4	1 1/2	1/2	1 1/2	Plain	Yes	90-03-001	S	.35
4	4	5/8	4	Plain	No	90-01-021		.85
5	2	3/8	2 1/2	Plain	Yes	90-03-039		1.25
5	2	1/2	1 5/8	Plain	Yes	90-03-002		1.25
5	2	1/2	2 1/2	Plain	Yes	90-03-003		1.25
5	2 3/4	1/2	2 1/2	Plain	Yes	90-03-006	S	1.25
5	2 3/4	1/2	3 5/16	Plain	No	90-03-038	S	1.25
5	2 3/4	5/8	2 1/2	Plain	Yes	90-03-005	S	1.25
5	2 3/4	5/8	3 5/16	Plain	No	90-03-037	S	1.25
6	3 1/4	3/4	3 1/2	Plain	No	90-01-100		2

LIGHT DUTY

A descendant of the Poly O series of wheels, the light duty is resistant to grease, oil, jet fuel, and hydraulic fluid. This 4 spoke Mag Wheel is ideal for light duty applications. Stocked in black, however available in various colors.

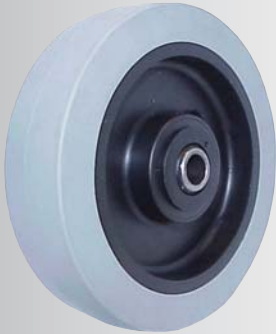


Wheel Diameter	Tread Width	Load Capacity	Bore Size	Hub Length	Bearing Type	Offset Hub	Part Number		Shipping Weight
6	1 1/2	60	3/8	1 1/2	Plain	Yes	99-013-28	S	.35
6	1 1/2	60	1/2	1 1/2	Plain	Yes	99-013-29	S	

"S" Denotes standard stock items. Stock - we carry in inventory.

POLYTECH SERIES THERMOPLASTIC RUBBER

Polytech Thermoplastic Rubber wheels are manufactured with a non-marking Thermoplastic Rubber tread, chemically bonded to a Polyolefin core. This combination provides smooth rolling, impact resistant wheels.



FEATURES

- Non Marking
- Light Weight
- Quiet Rolling
- Easily Cleaned
- Highly Impact Resistant
- Unaffected By Most Chemicals

TEMPERATURE RANGE -20° F / + 180° F

OPTIONS

- Metal Washers
- Sealed Precision Bearings
- Available in Various Colors



Wheel Diameter	Tread Width	Load Capacity	Bore Size	Hub Length	Bearing Type	Offset Hub	Part Number	
4	1	150	3/8	1 1/8	Plain	No	90-06-039-11	
4	1 3/8	200	1/2	1 1/2	Plain	No	90-06-037-11	
4	2	350	3/4	2 3/16	Plain	No	90-06-012-11	
4	2	350	3/4	2 3/16	Delrin	No	90-56-022-11	
4	2	350	3/4	2 3/16	Roller	No	90-26-022-11	
4	2	350	1 3/16	2 3/16	Plain	No	90-06-022-11	S
5	2	375	3/4	2 3/16	Plain	No	90-06-013-11	
5	2	375	3/4	2 3/16	Delrin	No	90-56-023-11	
5	2	375	3/4	2 3/16	Roller	No	90-26-023-11	
5	2	375	1 3/16	2 3/16	Plain	No	90-06-023-11	S
6	1 3/8	350	1/2	1 1/2	Delrin	No	90-46-088-11	
6	2	600	3/4	2 3/16	Plain	No	90-06-014-11	
6	2	600	3/4	2 3/16	Delrin	No	90-56-024-11	
6	2	600	3/4	2 3/16	Roller	No	90-26-024-11	
6	2	600	1 3/16	2 3/16	Plain	No	90-06-024-11	S
8	1 1/2	500	1 1/4	1 3/4	Plain	No	90-06-345-11	
8	1 1/2	500	1/2	1 5/16	BB	Yes	90-36-025-05	
8	2	675	3/4	2 3/16	Plain	No	90-06-008-11	
8	2	675	3/4	2 3/16	Delrin	No	90-56-025-11	
8	2	675	3/4	2 3/16	Roller	No	90-26-025-11	
8	2	675	1 3/16	2 3/16	Plain	No	90-06-025-11	S

"S" Denotes standard stock items. Stock - we carry in inventory.

POLYTECH SERIES POLYURETHANE

Capacity 150-1050

Circle Caster's Polytech wheels are heavy duty wheels manufactured from high grade materials. We use a Mechanical Bond on our treads that produces excellent adherence.

Tread materials available in Abrasion Resistant Polyurethane and Non-Marking Thermoplastic Rubber.

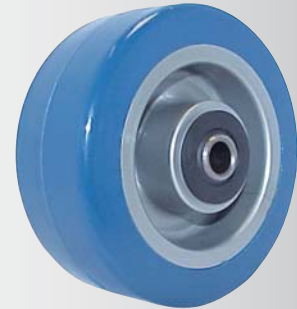
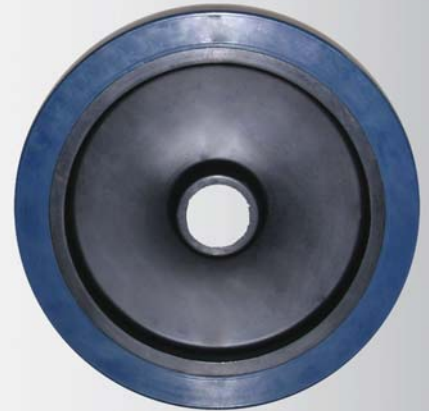
DUROMETER 55 SHORE D (POLYURETHANE)

DUROMETER 80 SHORE A (THERMOPLASTIC RUBBER)

4", 5", 6" and 8" Wheel Diameters available

OPTIONS

- Metal Washers
- Sealed Precision Bearings
- Available in Various Colors



Wheel Diameter	Tread Width	Load Capacity	Bore Size	Hub Length	Bearing Type	Offset Hub	Part Number	
4	2	600	3/4	2 3/16	Delrin	No	90-56-009-02	
4	2	600	3/4	2 3/16	Roller	No	90-26-009-02	
4	2	600	1 3/16	2 3/16	Plain	No	90-06-009-02	S
5	2	750	3/4	2 3/16	Delrin	No	90-56-002-02	
5	2	750	3/4	2 3/16	Roller	No	90-26-002-02	
5	2	750	1 3/16	2 3/16	Plain	No	90-06-002-02	S
6	1 1/2	360	1/2	1 3/4	BB	No	90-06-144-11	
6	2	900	3/4	2 3/16	Delrin	No	90-56-004-02	
6	2	900	3/4	2 3/16	Roller	No	90-26-004-02	
6	2	900	1 3/16	2 3/16	Plain	No	90-06-004-02	S
8	1 1/2	800	3/4	1 3/4	BB	No	90-06-348-11	
8	2	1000	3/4	2 3/16	Delrin	No	90-56-004-02	
8	2	1000	3/4	2 3/16	Roller	No	90-26-004-02	
8	2	1000	1 3/16	2 3/16	Plain	No	90-06-004-02	S

"S" Denotes standard stock items. Stock - we carry in inventory.



VALUE SERIES MOLD-ON WHEELS

These wheels provide quality and a competitive price. They are smooth rolling, quiet, impact and chemical resistant, while providing excellent floor protection. Tread materials available in durable Polyurethane and Thermoplastic Rubber.

VALUE SERIES THERMOPLASTIC RUBBER

Capacity 225-300



FEATURES

- Low Drag
- Non Marking
- Light Weight
- Cost Effective
- Unaffected by Most Chemicals

TEMPERATURE RANGE - 20° F / +180° F
DUROMETER 80 SHORE A

Wheel Diameter	Tread Width	Load Capacity	Bore Size	Hub Length	Bearing Type	Part Number		Shipping Weight
3	1 1/4	200	3/8	1 5/8	Delrin	90-06-058	S	.5
3	1 1/4	200	3/8	1 5/8	Ball	90-06-061	S	.5
3	1 1/4	200	3/8	1 5/8	Precision	90-06-064	S	.5
4	1 1/4	235	3/8	1 5/8	Delrin	90-06-059	S	.75
4	1 1/4	235	3/8	1 5/8	Ball	90-06-062	S	.75
4	1 1/4	235	3/8	1 5/8	Precision	90-06-065	S	.75
5	1 1/4	275	3/8	1 5/8	Ball	90-06-063	S	1
5	1 1/4	275	3/8	1 9/16	Precision	90-06-066	S	1
5	1 1/4	300	3/8	1 9/16	Precision	90-06-068	S	1.25

*Include Thread Guards

VALUE SERIES POLYURETHANE ON POLYOLEFIN

Capacity 225-425



FEATURES

- Low Drag
- Non Marking
- Light Weight
- Cost Effective
- Unaffected by Most Chemicals

TEMPERATURE RANGE - 20° F / +180° F
DUROMETER 75 SHORE D

Wheel Diameter	Tread Width	Load Capacity	Bore Size	Hub Length	Bearing Type	Part Number		Shipping Weight
3	1 1/4	225	3/8	1 5/8	Delrin	90-06-074		.5
3	1 1/4	225	3/8	1 5/8	Ball	90-06-077		.5
3	1 1/4	225	3/8	1 5/8	Precision	90-06-070*	S	.5
4	1 1/4	250	3/8	1 5/8	Delrin	90-06-075	S	.75
4	1 1/4	250	3/8	1 5/8	Ball	90-06-078*	S	.75
4	1 1/4	250	3/8	1 5/8	Precision	90-06-071	S	.75
5	1 1/4	300	3/8	1 5/8	Ball	90-06-079*	S	1
5	1 1/4	300	3/8	1 9/16	Precision	90-06-072*		1
6	1 1/4	425	3/8	1 9/16	Precision	90-06-081		1.25

*Include Thread Guards

"S" Denotes standard stock items. Stock - we carry in inventory.

RUBBER ON CAST IRON

Rubber on Cast Iron wheels consist of high quality Rubber tread that has been permanently vulcanized to a cast iron "semi-steel" core. These wheels are intended for use where shock absorption is of the utmost importance.



OPTIONS

- Metal Washers
- Sealed Precision Bearings

Wheel Diameter	Tread Width	Load Capacity	Bore Size	Hub Length	Bearing Type	Part Number	Shipping Weight
4	2	300	3/4	2 3/16	Delrin	84-11-013	2
4	2	300	3/4	2 3/16	Roller	84-12-013	2
4	2	300	1 3/16	2 3/16	Plain	84-10-014	2
5	2	500	3/4	2 3/16	Delrin	84-21-013	3.25
5	2	500	3/4	2 3/16	Roller	84-22-013	3.25
5	2	500	1 3/16	2 3/16	Plain	84-20-014	3.25
6	2	525	3/4	2 3/16	Delrin	84-31-013	4
6	2	525	3/4	2 3/16	Roller	84-32-013	4
6	2	525	1 3/16	2 3/16	Plain	84-30-014	4
8	2	600	3/4	2 3/16	Delrin	84-41-013	6.25
8	2	600	3/4	2 3/16	Roller	84-42-013	6.25
8	2	600	1 3/16	2 3/16	Plain	84-40-014	6.25

DURATOUGH

Duratough wheels consist of a granular Rubber tread mounted to a Polyolefin core. These take over where Semi-Pneumatic wheels leave off. These Duratough wheels have very high load capacities while retaining all of the good characteristics of Semi-Pneumatic Wheels.



OPTIONS

- Centered or Offset Hubs
- Flanged Bearings
- Roller Bearings

Wheel Diameter	Tread Width	Load Capacity	Bore Size	Hub Length	Offset Hub	Bearing Type	Part Number	Shipping weight
8	2	500	3/4	2 1/4	No	Roller	83-21-123	2.5
8	2 1/4	500	5/8	2 1/4	Yes	Ball	83-22-032	2.5
8	2 1/4	500	3/4	2 1/4	Yes	Ball	83-22-033	2.5
8	2 1/4	500	5/8	2 1/4	No	Ball	83-21-032	2.5
8	2 1/4	500	3/4	2 1/4	No	Ball	83-21-033	2.5
10	2 1/2	550	5/8	2 1/4	Yes	Ball	83-32-042	5.6
10	2 1/2	550	3/4	2 1/4	Yes	Ball	83-32-043	5.6
10	2 1/2	550	5/8	3 1/4	No	Ball	83-31-042	5.6
10	2 1/2	550	3/4	3 1/4	No	Ball	83-43-043	5.6
12	3	600	5/8	3 1/4	No	Ball	83-43-052	8.7
12	3	600	3/4	3 1/4	No	Ball	83-43-053	8.7

"S" Denotes standard stock items. Stock - we carry in inventory.



PHENOLIC WHEELS



Phenolic wheels have capacity ratings close to steel, but are quiet rolling. These wheels have been a mainstay of the caster industry for many years and are made of macerated canvas.

Wheel Diameter	Tread Width	Load Capacity	Bore Size	Hub Length	Bearing Type	Part Number	Shipping Weight
4	2	800	3/4	2 3/16	Delrin	82-21-034	1
4	2	800	3/4	2 3/16	Roller	82-22-034	1
4	2	800	1 3/16	2 3/16	Plain	82-20-035	1
5	2	1000	3/4	2 3/16	Delrin	82-31-034	1.75
5	2	1000	3/4	2 3/16	Roller	82-32-034	1.75
5	2	1000	1 3/16	2 3/16	Plain	82-30-035	1.75
6	2	1200	3/4	2 3/16	Delrin	82-41-034	2.5
6	2	1200	3/4	2 3/16	Roller	82-42-034	2.5
6	2	1200	1 3/16	2 3/16	Plain	82-40-035	2.5
8	2	2000	3/4	2 3/16	Delrin	82-51-034	3.75
8	2	2000	3/4	2 3/16	Roller	82-52-034	3.75
8	2	2000	1 3/16	2 3/16	Plain	82-50-035	3.75

FEATURES

- Non Marking
- Light Weight
- Cost Effective
- Highly Impact Resistant
- Resistant to Oils & Gasoline

TEMPERATURE RANGE -45° F / + 250° F
DUROMETER 100 SHORE D

OPTIONS

- Metal Washers
- Grease Zerk in Wheel
- Sealed Precision Bearings



HI TEMP / HEAT DEFLECTOR

Capacity 325-1000

Heat Deflector Wheels are manufactured from Fiberglass reinforced NYLON. These wheels are intended for use in HIGH HEAT applications. Their formulation makes them impervious to acids, moisture and harsh chemicals and they outperform Phenolic Resin wheels.



TEMPERATURE RANGE: -20 F / +480 F
DUROMETER 65 Shore D

- Available in 3" to 8" Diameters

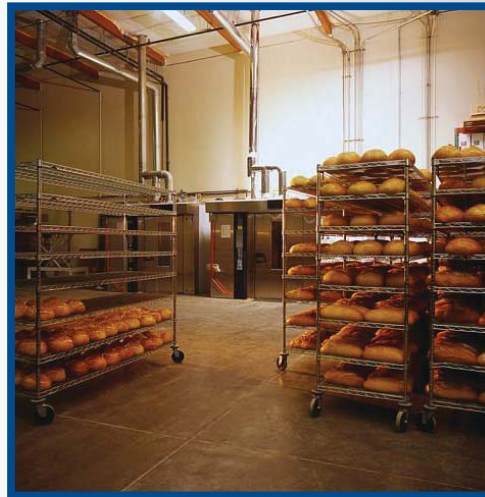
FEATURES

- Non Marking
- Easy Rolling
- Easily Cleaned
- Highly Impact Resistant
- Unaffected by Most Chemicals

OPTIONS

- Metal Washers
- High Temp Grease
- Sealed Precision Bearings

*Bearings are not recommended for High Temperature Use



Wheel Diameter	Tread Width	Bore Size	Bore		Part Number
3	1 3/8	1/2	Plain	S	80-10-042
3 1/2	1 3/8	1/2	Plain		80-60-042
4	1 3/8	1/2	Plain	S	80-20-042
4	1 1/2	3/4	Plain		80-20-024
4	2	3/4	Plain		80-20-034
4	2	1 3/16	Plain	S	80-20-035
5	1 1/2	1/2	Plain		80-30-022
5	2	1 3/16	Plain	S	80-30-035
6	2	1 3/16	Plain	S	80-40-035
8	2	1 3/16	Plain	S	80-50-035

"S" Denotes standard stock items. Stock - we carry in inventory.



SOLID RUBBER WHEELS



Hard Rubber wheels are manufactured from Solid Rubber. This provides higher capacities than Soft Rubber wheels. This also provides an easy rolling wheel that will withstand higher impact. These wheels have a temperature range from -40 F to + 160 F. The tread has a Durometer of 75 Shore D.

Soft Rubber wheels are manufactured by molding a soft rubber tread to a hard rubber core. This combination provides a quiet rolling wheel with excellent floor protection. Soft rubber wheels have a temperature range from -40 F to + 160 F. The tread has a Durometer of 75 Shore A.

CHOICE OF OUTER TREAD

HARD RUBBER OUTER TREAD

- All Hard Rubber Construction
- High Impact Resistance
- Greater Load Capacity
- Easier Rolling and Maneuverability
- Won't Develop a Flat Side Under a Heavier Stationery Load

SOFT RUBBER OUTER TREAD

- Quieter rolling
- Cushioned Ride
- For Light to Medium Loads
- Less Likely to Scratch Floors
- Black or Grey Rubber

TEMPERATURE RANGE FROM -40 F TO + 160 F
DUROMETER OF 75 SHORE D

TEMPERATURE RANGE -40° F - + 160° F
DUROMETER OF 75 SHORE A

Part Number	Diameter	Tread Width	Hub Length	Bore Size	Bearing	Color	Tread	Load Capacity	
2902R	2	3/4	13/16	1/4	Sintered	Black	Soft	75	S
2903R	2	3/4	13/16	1/4	Sintered	Grey	Soft	75	S
2904R	2	3/4	13/16	1/4	Sintered	Black	Hard	100	S
2905R	2 1/2	3/4	13/16	1/4	Sintered	Black	Soft	90	S
2917R	2 1/2	3/4	13/16	3/8	Sintered / Bronze	Grey	Soft	115	S
2909R	2 1/2	3/4	13/16	3/8	Sintered	Grey	Soft	115	S
2901R	2 1/2	1 1/8	1 1/4	5/16	Sintered	Black	Soft	110	S
2908R	2 1/2	1 1/8	1 1/4	5/16	Sintered	Black	Hard	135	S
3901R	3	3/4	15/16	15/16	Sintered	Black	Soft	100	S
3905R	3	1 1/4	1 1/2	3/8	Sintered	Black	Soft	125	S
3913R	3	1 1/4	1 1/2	3/8	Sintered	Black	Hard	210	S
3906R	3	1 1/4	1 1/2	1/2	Sintered	Black	Soft	125	S
3912R	3	1 1/4	1 1/2	1/2	Sintered	Black	Hard	210	S

"S" Denotes standard stock items. Stock - we carry in inventory.

SOLID RUBBER WHEELS



Part Number	Diameter	Tread Width	Hub Length	Bore Size	Bearing	Color	Tread	Load Capacity	
4901R	4	1	1 1/8	5/16	Sintered	Black	Soft	115	S
4905R	4	1	1 1/8	3/8	Sintered	Black	Soft	115	S
4978R	4	1	1 1/8	3/8	Sinter/Bronze	Grey	Soft	115	S
4906R	4	1	1 1/8	1/2	Sintered	Black	Soft	115	S
4942R	4	1	1 1/8	1/2	Sintered	Grey	Soft	115	S
4911R	4	1 1/4	1 3/8	3/8	Sintered	Black	Soft	165	S
4912R	4	1 1/4	1 3/8	3/8	Sintered	Black	Hard	255	S
4908R	4	1 1/4	1 3/8	1/2	Sintered	Black	Soft	165	S
4964R	4	1 1/4	1 3/8	1/2	Sintered	Grey	Soft	165	S
5901R	5	1	1 1/8	5/16	Sintered	Black	Soft	125	S
5909R	5	1	1 1/8	3/8	Sintered	Black	Soft	125	S
5906R	5	1	1 1/8	3/8	Sintered	Lt. Grey	Soft	125	S
5912R	5	1	1 1/8	1/2	Sintered	Grey	Soft	125	S
5920R	5	1 1/4	1 1/2	3/8	Sintered	Black	Soft	190	S
5921R	5	1 1/4	1 1/2	3/8	Sintered	Black	Hard	280	S
5902R	5	1 3/8	1 9/16	1/2	Ball	Black	Soft	190	S

Part Number	Diameter	Width	Hub Length	Bore Size	Bearing	Color	Tread	Load Capacity	
5907R	5	1 1/2	1 5/8	1/2	Sintered	Black	Soft	240	S
6901R	6	1 1/16	1 3/8	1/2	Sintered	Grey	Soft	200	S
6909R	6	2	2 1/8	1/2	Sintered	Blk/Rib	Semi-Hard	350	S



NYLON HOODED TWIN WHEEL CASTERS



NYLON HOODED TWIN WHEEL CASTERS

Wheel Diameter	Caster Width	Load Capacity	Wheel Color	Caster Finish	Wheel Material	Overall Height	Mounting Option	Part Number
1 5/8 (40mm)	1 9/16	40	Black	Black	Nylon	1 15/16	7/16 x 1 Friction Ring Stem	TW87D0320831
1 5/8 (40mm)	1 9/16	40	Black	Black	Nylon	1 15/16	7/16 x 1 3/8 Friction Ring Stem	TW87D0320928
1 5/8 (40mm)	1 9/16	40	Black	Black	Nylon	1 15/16	3/8 -16 x 3/4 Threaded Stem	TW87D0320816
1 5/8 (40mm)	1 9/16	40	Black	Black	Nylon	1 15/16	5/16-18x 3/4 Threaded Stem	TW87D0320805
1 5/8 (40mm)	1 9/16	40	Black	Black	Nylon	2 1/4	1 1/2 x 1 1/2 Top Plate	TW77D0320898
1 5/8 (40mm)	1 9/16	40	Black	Black	Nylon	2 1/4	2 x 1 3/16 Top Plate	TW77D0320896
2 (50mm)	1 13/16	75	Black	Black	Nylon	2 7/16	7/16 x 1 Friction Ring Stem	TW8720320831
2 (50mm)	1 13/16	75	Black	Black	Nylon	2 7/16	7/16 x 1 3/8 Friction Ring Stem	TW8720320828
2 (50mm)	1 13/16	75	Black	Black	Nylon	2 7/16	3/8-16x3/4 Threaded Stem	TW8720320816
2 (50mm)	1 13/16	75	Black	Black	Nylon	2 7/16	5/16 - 18 x 3/4 Threaded Stem	TW8720320805
2 (50mm)	1 13/16	75	Black	Black	Nylon	2 5/8	1 1/2 x 1 1/2 Top Plate	TW7720320898
2 (50mm)	1 13/16	75	Black	Black	Nylon	2 5/8	2 x 1 3/16 Top Plate	TW7720320896

OPTIONS

- Additional Mounting Options and Stem Lengths are Available
- Brake Options Available



THE ANATOMY OF A CASTER

STEM CASTER

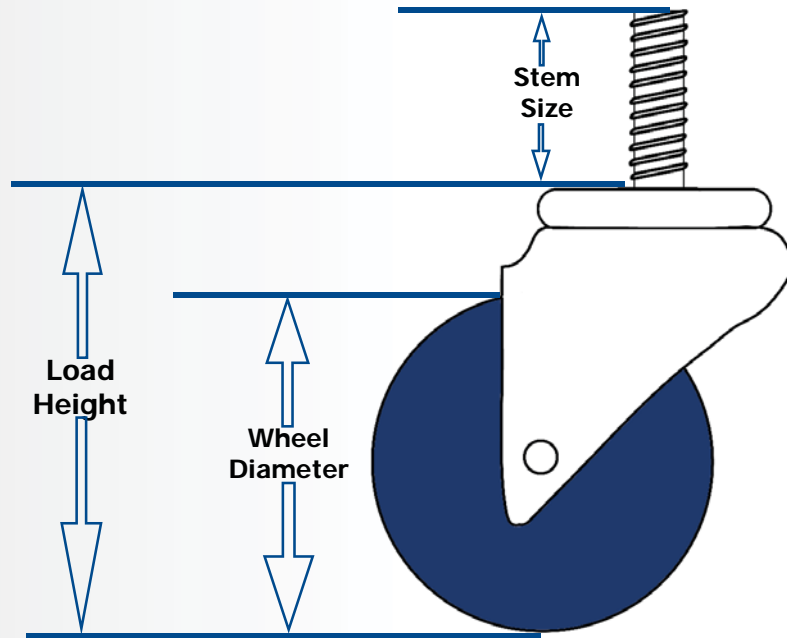
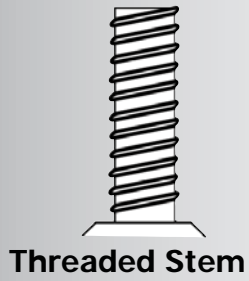
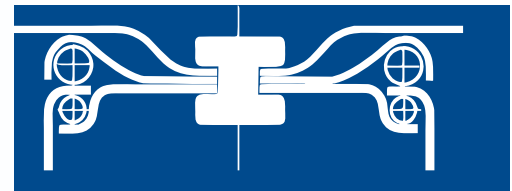
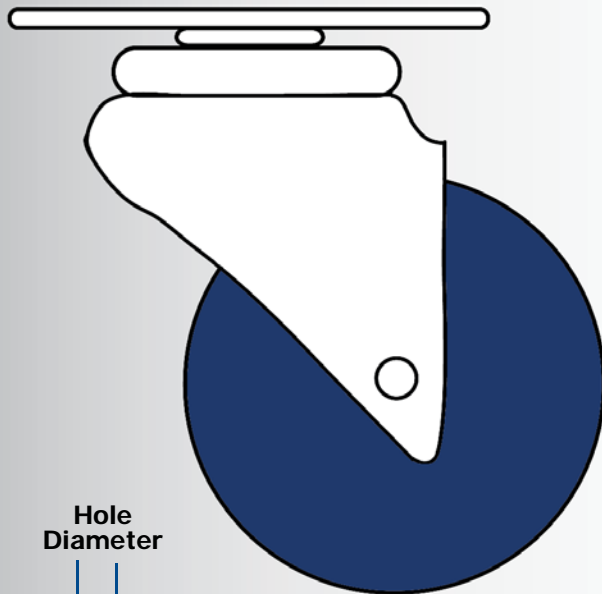
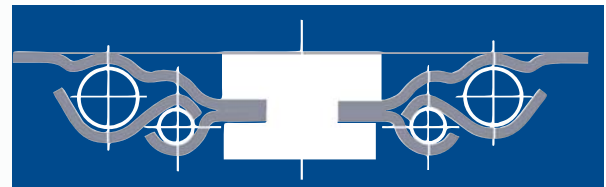


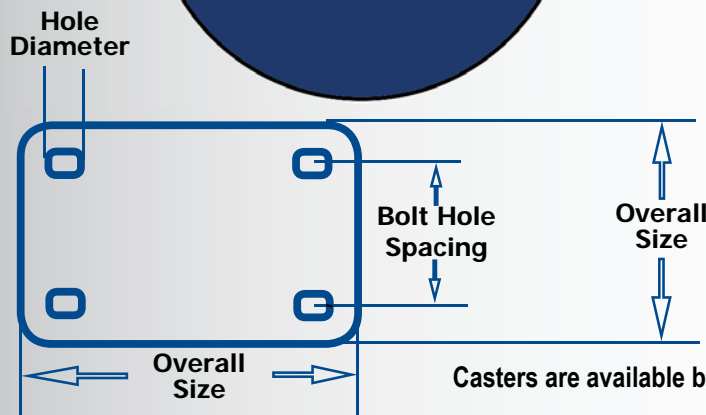
PLATE CASTER



100 Series Swivel Cross Section



200 Series Swivel Cross Section



Casters are available both with and without brakes.

100 SERIES LIGHT DUTY CASTERS

FEATURES

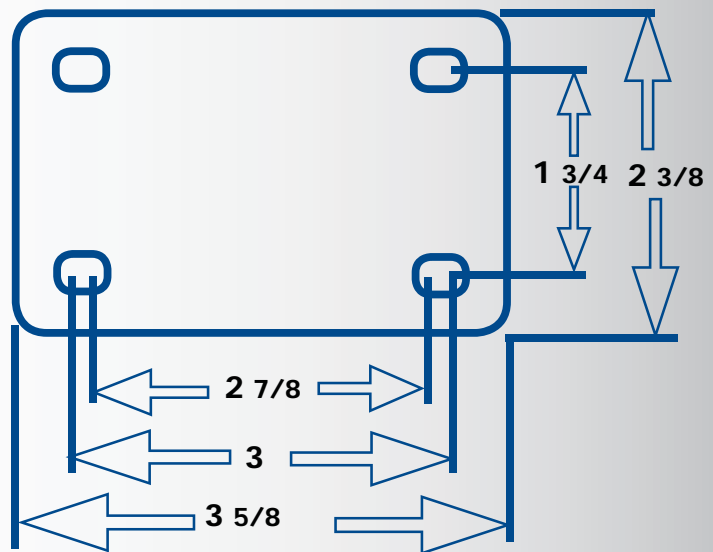
- Low Cost
- Double Ball Raceway
- Deeply Corrugated for Strength and Durability
- High Quality Corrosion Resistant Zinc Plating



OPTIONS

- Swivel Casters Available with Brake
- Available with Threaded or Grip Ring Stem
- Available with Zinc Plated Axle and Lock Nut

Wheel Diameter	Tread Width	Swivel Radius	Load Capacity	Wheel Material	Bearing Type	Overall Height	Part Number	
							Swivel	Rigid
3	1	2 5/8	90	Soft Rubber	Sintered	3 7/8	3213902-0300	3313902-0300
3	1	2 5/8	110	Hard Rubber	Sintered	3 7/8	3213903-0300	3313903-0300
3	1	2 5/8	125	Poly O Dished	Plain	3 7/8	3213001-0300	3313001-0300
4	1	3 1/4	90	Soft Rubber	Sintered	4 7/8	3214902-0300	3314902-0300
4	1	3 1/4	120	Hard Rubber	Sintered	4 7/8	3214903-0300	3314903-0300
4	1	3 1/4	135	Poly O Dished	Plain	4 7/8	3214001-0300	3314001-0300
5	1	4	100	Soft Rubber	Sintered	5 7/8	3215902-0300	3315902-0300
5	1	4	130	Hard Rubber	Sintered	5 7/8	3215903-0300	3315903-0300
5	1	4	145	Poly O Dished	Plain	5 7/8	3215001-0300	3315001-0300



130 SERIES LIGHT MEDIUM DUTY CASTERS

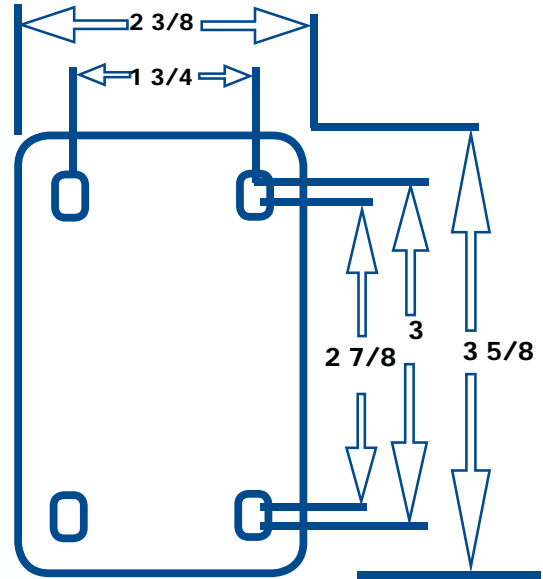


FEATURES

- Very Durable & Economical
- Heavily Embossed, Deeply Corrugated, Formed Steel
- Hydraulically Staked Steel Kingpin
- Large Diameter Double Ball Bearing Raceway
- High Quality Corrosion Resistant Zinc Plating

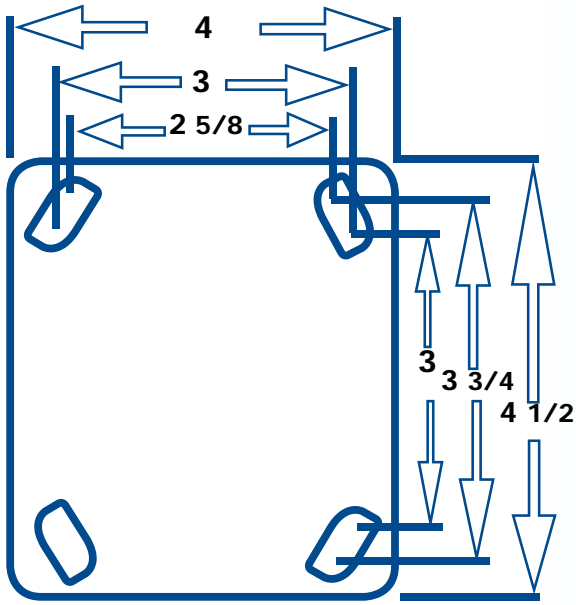
OPTIONS

- Swivel Casters Available with Brake
- Available with Zinc Plated Axle and Lock Nut



Wheel Diameter	Tread Width	Swivel Radius	Load Capacity	Wheel Material	Bearing Type	Overall Height	Part Number	
							Swivel	Rigid
3	1 1/4	2 7/8	175	Soft Rubber	Sintered	4 1/8	4213902-0300	4313902-0300
3	1 1/4	2 7/8	210	TPR Poly O	Precision	4 1/8	4213826-0300	4313826-0300
3	1 1/4	2 7/8	260	Hard Rubber	Sintered	4 1/8	4213903-0300	4313903-0300
3	1 1/4	2 7/8	275	Poly O Dished	Plain	4 1/8	4213001-0300	4313001-0300
3	1 1/4	2 7/8	275	Poly U Poly O	Precision	4 1/8	4213835-0300	4313835-0300
4	1 1/4	3 3/8	200	Soft Rubber	Sintered	5	4214902-0300	4314902-0300
4	1 1/4	3 3/8	250	TPR Poly O	Precision	5	4214826-0300	4314826-0300
4	1 1/4	3 3/8	270	Hard Rubber	Sintered	5	4214903-0300	4314903-0300
4	1 1/4	3 3/8	300	Poly O Dished	Plain	5	4214001-0300	4314001-0300
4	1 1/4	3 3/8	300	Poly U Poly O	Precision	5	4214835-0300	4314835-0300
4	1 1/4	3 3/8	300	Poly O Solid	Plain	5	5214004-0300	5314004-0300
5	1 1/4	3 5/8	200	Soft Rubber	Sintered	6 1/4	4215902-0300	4315902-0300
5	1 1/4	3 5/8	250	TPR Poly O	Precision	6 1/4	4215826-0300	4315826-0300
5	1 1/4	3 5/8	290	Hard Rubber	Sintered	6 1/4	4215903-0300	4315903-0300
5	1 1/4	3 5/8	300	Poly O Dished	Plain	6 1/4	4215001-0300	4315001-0300
5	1 1/4	3 5/8	300	Poly U Poly O	Precision	6 1/4	4215835-0300	4315835-0300

200 SERIES MEDIUM HEAVY DUTY CASTERS



FEATURES

- 1/4" Cold Forged Steel Construction
- Two Rows of Ball Bearings
- Hardened Raceways
- Machine Welded Construction for Consistent Performance
- 5/8" Diameter Steel King Pin
- High Quality Corrosion Resistant Zinc Plated Finish
- Metal Caged Roller Bearing
- Grease Fitting in Swivel Raceway and Wheel or Axle

OPTIONS

- Tread Brake • Precision Bearing • Sealed Top and Bottom Raceway
- Metal Washers • Plain Bore / No Bearing or Spanner Bushing
- Wheel Bearing Seals • Delrin Bearing • Plain Bore / No Bearing

Wheel Diameter	Tread Width	Swivel Radius	Load Capacity	Wheel Material	Bearing Type	Overall Height	Part Number	
							Swivel	Rigid
4	2	3 1/2	345	Rubber Cast Iron	Roller	5 5/8	8234129-0300	8334129-0300
4	2	3 1/2	350	Polytec TPR	Roller	5 5/8	8234112-0300	8334112-0300
4	2	3 1/2	500	Poly O Dished	Roller	5 5/8	8234101-0300	8334101-0300
4	2	3 1/2	650	Polytec Urethane	Roller	5 5/8	8234122-0300	8334122-0300
4	2	3 1/2	700	Phenolic	Roller	5 5/8	8234108-0300	8334108-0300
5	2	4	425	Rubber Cast Iron	Roller	6 1/2	8235129-0300	8335129-0300
5	2	4	450	Polytec TPR	Roller	6 1/2	8235112-0300	8335112-0300
5	2	4	625	Poly O Dished	Roller	6 1/2	8235101-0300	8335101-0300
5	2	4	800	Phenolic	Roller	6 1/2	8235108-0300	8335108-0300
6	2	4 1/2	475	Rubber Cast Iron	Roller	7 1/2	8236129-0300	5336129-0300
6	2	4 1/2	500	Polytec TPR	Roller	7 1/2	8236112-0300	8336112-0300
6	2	4 1/2	750	Poly O Dished	Roller	7 1/2	8236101-0300	8336101-0300
6	2	4 1/2	800	Polytec Urethane	Roller	7 1/2	8236122-0300	8336122-0300
6	2	4 1/2	900	Phenolic	Roller	7 1/2	8236108-0300	8336108-0300
8	2	6	550	Rubber Cast Iron	Roller	9 1/2	8238129-0300	8338129-0300
8	2	6	600	Polytec TPR	Roller	9 1/2	8238112-0300	8338112-0300
8	2	6	800	Poly O Dished	Roller	9 1/2	8238101-0300	8338101-0300
8	2	6	850	Polytec Urethane	Roller	9 1/2	8238122-0300	8338122-0300
8	2	6	1000	Phenolic	Roller	9 1/2	8238108-0300	8338108-0300

PNEUMATIC CASTERS

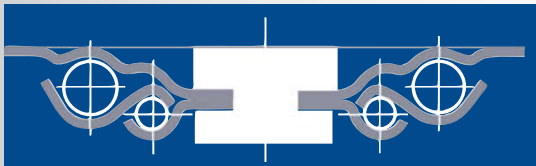


Circle Caster's Air Master Pneumatic Casters are as good as it gets when looking for shock absorption. These Casters are manufactured with quality in mind. We use Butyl tubes to ensure that your tires are not flat.

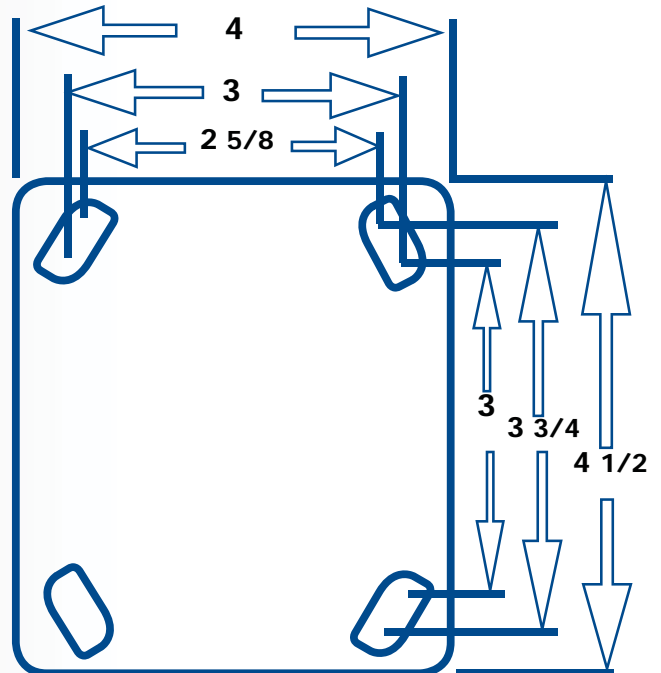
Grey tires are special and may need lead time and require minimum order quantities.

TOP PLATE DIMENSION: 4" X 4 1/2"
 BOLT PATTERN: 2 5/8" X 3 3/4" TO 3" X 3"

Part #	Diameter	Tread Width	Swivel Radius	Load Capacity	Overall Height	Color	
10208242-0300	8	280/250-4	6 3/4	300	10 1/8	Black	S
10308242-0300	8	280/250-4	6 3/4	300	10 1/8	Black	S
10208244-0300	8	280/250-4	6 3/4	300	10 1/8	Grey	S
10308244-0300	8	280/250-4	6 3/4	300	10 1/8	Grey	S
1220A242-0300	10	410/350-4	8 1/4	350	12 1/2	Black	
1230A242-0300	10	410/350-4	8 1/4	350	12 1/2	Black	
1220A244-0300	10	410/350-4	8 1/4	350	13 3/4	Grey	
1230A244-0300	10	410/350-4	8 1/4	350	13 3/4	Grey	



Air Master Swivel Cross Section



BEARINGS & BUSHINGS

A bearing allows constrained relative motion between two or more parts, typically rotation or linear movement. Bearings may be classified broadly according to the motions they allow and according to their principle of operation as well as by the directions of applied loads they can handle. Below are listed those types provided by Circle Caster Engineering.

Bushing (bearing), a type of plain bearing.

Plain - Center hole of the wheel.

Ball - Can handle both radial as well as thrust loads. Found in applications where the load is relatively small.

Roller - Round elements are placed between two pieces allowing for very little rolling resistance or sliding. Roller Bearings are suitable for use where subject to severe shock or thrust loads.

Sintered - Produced by heating material below its melting point until particles adhere to each other. Sintered Bearings are used in applications that call for movement along or around a shaft. Sintered Bearings are a cost effective alternative to Ball Bearings.

Delrin - An engineered Thermoplastic used in precision parts that require high stiffness, low friction and dimensional stability. Applicable to a wide range of temperatures. Excellent where water or liquids are present. The Delrin Bearing is corrosion resistant.

Precision - Sealed and suitable for lighter loads where sound is a factor. Very quiet rolling. 2 required per wheel.

PLASTIC SPANNER BUSHINGS				
Part Number	O.D.	I.D.	Length	Series
PB-43-31-115	7/16	5/16	1 5/32	100
PB-50-37-150	1/2	3/8	1 1/2	125 / 130
PB-50-37-168	1/2	3/8	1 11/16	130
PB-75-50-187	3/4	1/2	1 7/8	150
PB-75-50-243	3/4	1/2	2 7/16	200

PLASTIC CAGE ROLLER BEARING			
Part Number	O.D.	I.D.	Length
99-013-7AB	3/4	3/8	1 3/16
99-013-9AB	7/8	1/2	1 3/16



BEARINGS & BUSHINGS

**FLANGED BALL
REQUIRES 2 PER WHEEL**

Part #	O.D.	I.D.
BB-112-25	1 1/8	1/4
BB-112-31	1 1/8	5/16
BB-112-37	1 1/8	3/8
BB-137-50	1 3/8	1/2
BB-137-62	1 3/8	5/8
BB-137-75	1 3/8	3/4

**FLANGED PRECISION BALL
REQUIRES 2 PER WHEEL**

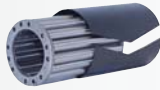
Part Number	O.D	I.D
PB-118-50	1 3/16	1/2

DELRIN TOP HAT - REQUIRES 2 PER WHEEL

Part Number	O.D.	I.D.	Length
DB-118-50-68	1 3/16	1/2	11/16
DB-118-75-68	1 3/16	3/4	11/16

DRAWN CUP / CAGED ROLLER

Part Number	O.D.	I.D.	Length
CB-118-75-187	1 3/16	3/4	1 7/8



METAL SPANNER BUSHINGS

Part Number	O.D.	I.D.	Length	Series
MB-43-31-115	7/16	5/16	1 5/32	100
MB-50-37-150	1/2	3/8	1 1/2	125 / 130
MB-50-37-168	1/2	3/8	1 11/16	130
MB-75-50-187	3/4	1/2	1 7/8	150
MB-75-50-243	3/4	1/2	2 7/16	200

**PLASTIC BUSHING / BEARING
REQUIRES 2 PER WHEEL**

Part Number	O.D.	I.D.	Length
13-100-065	1 3/16	3/8	11/16
13-100-036	1 3/16	1/2	11/16
03-100-022	1 3/16	5/8	2 1/8
03-100-034	1 3/16	3/4	2 1/8

**FLANGED SEMI PRECISION BALL
REQUIRES 2 PER WHEEL**

Part Number	O.D	I.D
SB-118-50	1 3/16	1/2

FLANGED WASHER / SEAL

Part Number	O.D.	I.D.	COLOR
03-100-041	1 3/16	3/4	Natural
03-100-042	1 3/16	3/4	Black

METAL CAGE ROLLER

Part Number	O.D.	I.D.	Length
RB-106-50-112	1 1/16	1/2	1 1/8
RB-118-50-125	1 3/16	1/2	1 1/4
RB-118-62-125	1 3/16	5/8	1 1/4
RB-118-62-187	1 3/16	5/8	1 7/8
RB-118-75-125	1 3/16	3/4	1 1/4
RB-118-75-187	1 3/16	3/4	1 7/8

SUGGESTED USAGE

SERIES	CAPACITY	APPLICATION
100 Series Light Duty	90-145	Display Units / Bakery Rack / Dollies / Tool Boxes
130 Series Light Medium Duty	175-300	Food Service Carts / Bakery Racks Maintenance Carts / Hospitality Industry Equipment / Mobile Display Systems Misc Storage Units/ Racks/ Carts
200 Series Medium Heavy Duty	345-1000	Platform Trucks / Dollies / Heavy Appliances / Warehouse & Factory Equipment Bakery & Foodservice Equipment / Medium Duty Drag Line Trucks Tool Boxes / Misc Carts
Poly O Series White General Duty	225-1000	Food Service Industry / Hospital Settings
Poly O Series Dished General Duty	75-1050	Wide range of Industrial Usage
Poly O Series Dished Heavy Duty	425-1000	Platform Trucks/ Warehouse Trucks/ Portable Shelves
Poly O Series Ribbed Heavy Duty	550-1000	Wide Range of Industrial Usage
Poly O Series Specialty	Call for Ratings	Lawn & Garden Applications / BBQ Grills / Light - Medium Duty Applications
Poly O Series Straight Sided Heavy Duty	175-450	Linen Carts / Heavier Food Service / Light Warehouse / Order Picking Trucks
Polytech Series Polyurethane	600-1000	Linen Carts / Heavier Food Service / Light Warehouse / Order Picking Trucks Excellent for Use in Environments Hostile to Steel or Phenolic Wheels
Polytech Series Thermoplastic Rubber	150-675	Linen Carts/ Heavier Food Service/ Light Warehouse / Order Picking Trucks/ Platform Trucks/ Portable Shelves
Polytech Series Mag Wheel	450	For Heavy Loads in Almost Any Environment
Phenolic	800-2000	Capacity Ratings Close to Steel/ But for Quiet Rolling
Heat Deflector	325-1000	Intended for Use Where Heat is an Issue
Value Series Thermoplastic Rubber	200-300	Perfect for use in areas where floor protection is necessary
Value Series Polyurethane On Polyolefin	225-425	Perfect for Usage in Areas Where Floor Protection is Necessary
Rubber on Cast Iron	300-600	Use Where Shock Absorption is Important Cast Iron Core Provides Added Strength Under Heavy Loads
Semi-Pneumatic	35-240	Lawn & Garden Applications/ Light Industrial
Duratough	300-600	Hard Floor Applications
Pneumatic	300-515	Pneumatic Wheels Use Air Pressure to Provide Shock Absorption/ Quiet Operation/ and Ease of Rolling Over Rough Terrain Applications include Linen Carts/ Heavier Food Service/ Light Warehouse /Order Picking Trucks/ Power Generators
Soft Rubber	175-375	Hard Surfaces
Hard Rubber	185-400	Soft Surfaces





CASTER SELECTION WORKSHEET

Describe your application.

Weight of equipment: _____ Number of casters to be used: _____

Overall size of equipment? (L x W x H): _____

How will the caster be mounted? Top Plate Threaded Stem Grip Ring Stem Other

Top Plate dimensions? (L x W) _____

Top Plate bolt hole spacing? _____

Threaded Stem or Grip Ring dimensions: Diameter Length Threads Per Inch

Caster height limitations? _____

Is a brake required? Y N

Is a swivel lock required? Y N

Will equipment be subject to shock loading? Y N

What is the maximum speed the equipment will experience? (Mph):

Will this equipment be used in the preparation or handling of food? Y N

Floor Surface: Concrete Hardwood Carpet Steel Asphalt Gravel Other

Operating environment: Debris Water Chemicals _____ Type

Floor condition: Smooth Moderate Rough Extremely Rough

Excessive heat? _____ Fahrenheit _____ Length of time: _____

Excessive cold? _____ Fahrenheit _____ Length of time: _____

Contact Information:

Name: _____ Title: _____

Company: _____ Phone: _____

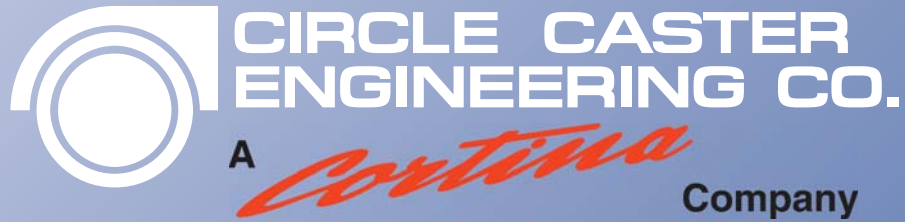
Street Address: _____

City, State, Zip: _____

E-mail Address: _____

Please fax your complete worksheet to: 847-451 7247





10706 W. Grand Avenue
Franklin Park, IL 60131

PHONE:

800-225-5206

847-455-2800

Fax: 847-451-7247

www.CortinaCo.com